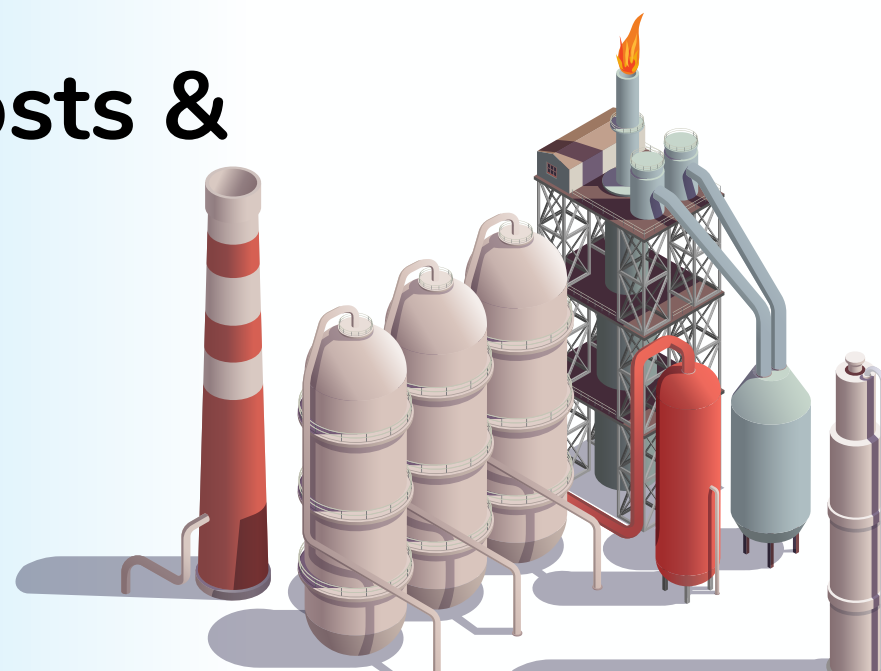


Achieved up to
**10% reduction in Freight Costs &
90% savings in Vehicle
Finalization Time**



→ High Freight savings



→ Faster Vehicle Finalization

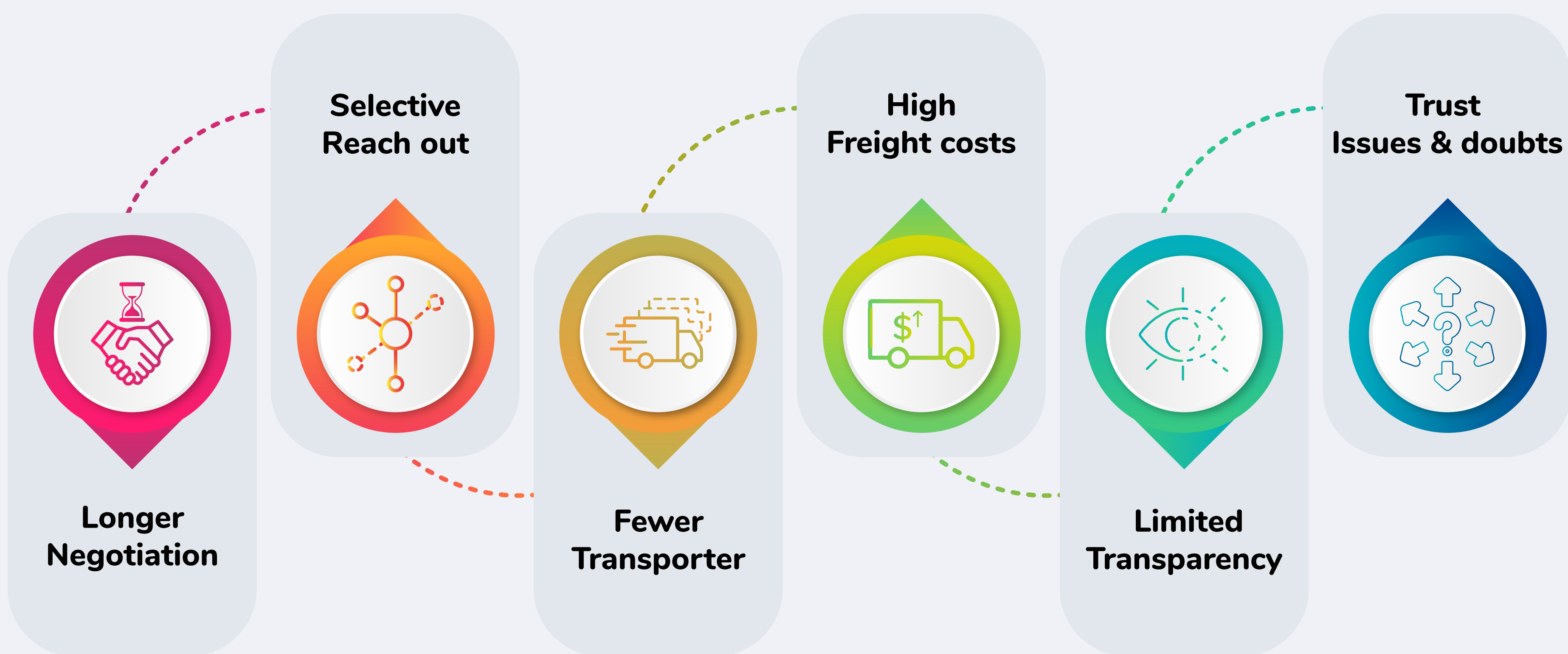


→ Trusted collaboration

About the Company

Offshore Infrastructures Limited, India's leading industrial construction company with an annual turnover of 275 Mn USD, dealing in mechanical construction, fire protection systems, civil & structural work, and more.

Key Challenges



A manual process for sourcing vehicles resulted in longer negotiations, selective reach out, fewer transporter options & high freight costs.

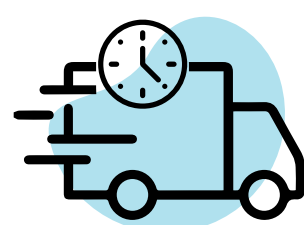
Multiple manual follow ups made the negotiation process with the transporters lengthier, delaying the vehicle finalization.

The vehicle sourcing process right from getting rates to allotment had limited transparency causing trust issues & doubts among transporters & management.

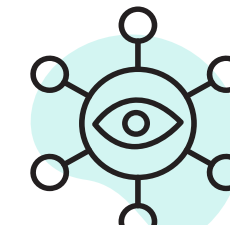
What Offshore Infrastructure Achieved?



SP reverse e-bidding feature encouraged transporters to revise their bids and achieve a higher rank, promoting healthy competition & remarkable freight savings



The auction window of 30 minutes ensures prompt response from the transporters and expedites the vehicle finalization process



A transparent bidding and allocation process helps build trust with transport partners

Key Achievements



5-10%
Reduction in freight costs



90%
Time savings in vehicle finalization



Customer Support



Ease of use



Quality



Mr. Ajay Kumar
Resident Construction Manager

As a result of SuperProcure, we have gained greater transparency in our system and also saved money. Previously, sourcing vehicles would take days, but now it takes only a few hours, allowing us to finalize them faster.



Mr. Parshuram
Transport Manager

Our work has been made easier by SuperProcure. There is no headache anymore, and sourcing vehicles has become much simpler and more efficient.

Contact us at

Ready to achieve similar results?

📞 +91-9555900700

✉️ hello@superprocure.com